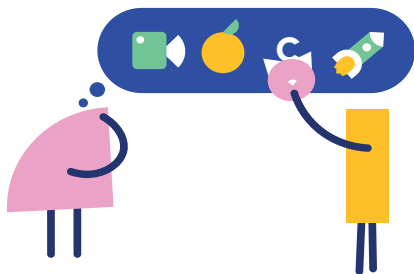


Creating a Strong and Secret Password

Open, Sesame!

A password is a secret code that keeps your information safe. You need one to log into your personal online accounts, like your virtual learning environment (VLE).

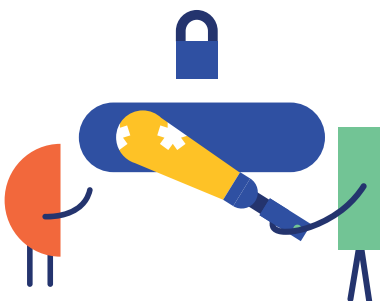
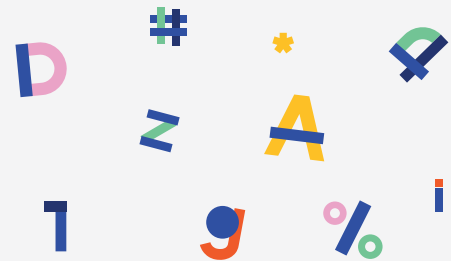


Make It Hard to Guess

Avoid using your pet's name, nickname, birthdate, or anything easy to figure out. Instead, try using the first letters of a sentence you like! For example: "Grandma's pancakes are the best in the world" = #Gp@nc@btW!

Make It Complex

A strong password should be long and include: Uppercase and lowercase letters, Numbers and Special characters like : 1@#\$%



Keep it Secret

Don't write it down and don't tell it to anyone, not even your friends! Someone could modify your profile or publish something you don't agree with in your name

It's unique

Use a different password for each account and memorize them well! If you're worried about forgetting them, ask a trusted adult for help.

